



## Welcome to EzWAP

---

EzWAP places Mobile Internet information and services in the palm of your hand. Devices such as Pocket PCs 2002 Phone Edition which run the EzWAP micro-browser, offer easy and secure access to relevant Internet/Intranet information over wireless networks thanks to the integrated support for WML 1.2.1, cHTML and XHTML basic standards.

Simply install EzWAP on your device, connect to your Internet Service Provider (ISP), and then you can browse Mobile Internet sites as easily as you currently browse HTML sites using a standard web browser.

You can also create, send and receive MMS messages. Enhanced messages containing graphics, sound and text are as simple to create as a PowerPoint presentation. With the integrated tools, EzPAINT and EzMELODY, you can create your own funny images and sounds.

EzWAP 2.5 improves security thanks to its WPKI functionalities and Smart Card integration onto enabled devices.

This document describes how to quickly get started with EzWAP 2.5.

**Enjoy mobile surfing anywhere!**



**Belgium**  
Rue de l'Hôpital, 5  
B-1420 Braine-l'Alleud  
Phone: +32 2 387 20 00  
Fax: +32 2 387 20 10

**France**  
Boulevard de Valmy, 1  
F-59650 Villeneuve d'Ascq  
Phone : + 33 3 20 19 00 60  
Fax : + 33 3 20 19 00 69

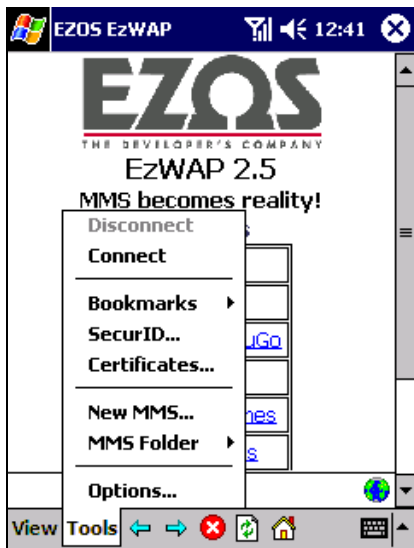
E-mail: [info@ezos.com](mailto:info@ezos.com)  
Web site: <http://www.ezos.com>

## Configuring EzWAP

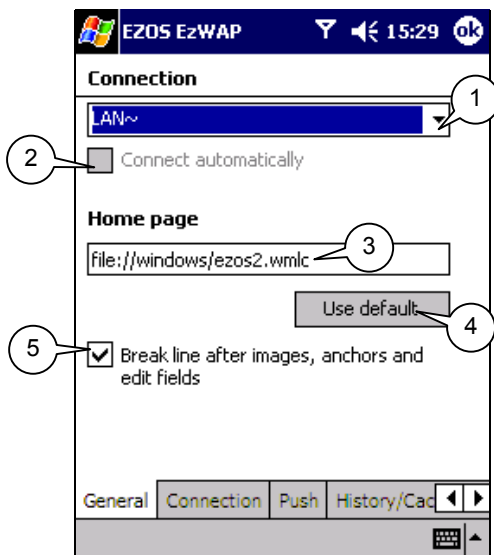
Before using EzWAP for the first time you have to configure your Pocket PC connection settings to enable communication with your provider. You should also set a number of other options to customize EzWAP, including the History/Cache settings and MMS parameters. This information is also available from the Control Panel of your Pocket PC.

### To configure your wireless connection

1. In the EzWAP **Tools** menu, select **Options....**



2. Select the **General** tab to edit the general settings.



- Use the **Connection** selection box (1) to select the dial-up connection to be used.



**Belgium**  
Rue de l'Hôpital, 5  
B-1420 Braine-l'Alleud  
Phone: +32 2 387 20 00  
Fax: +32 2 387 20 10

**France**  
Boulevard de Valmy, 1  
F-59650 Villeneuve d'Ascq  
Phone : + 33 3 20 19 00 60  
Fax : + 33 3 20 19 00 69

E-mail: [info@ezos.com](mailto:info@ezos.com)  
Web site: <http://www.ezos.com>

- Check the **Connect automatically** box (2) if you want EzWAP to automatically activate the selected connection when needed.
  - To change the default WML document that will load automatically as home page, enter a valid URL in the **Home page** box (3).  
Or,  
Tap the **Use default** button (4) to select the default EzWAP page as standard home page.
  - Check the **Break line after images, anchors and edit fields** box (5) if you want a line feed to be automatically inserted after input fields, anchors and images.
3. Select the **Connection** tab to provide technical details about your WAP connection. Under **Connection type**, select one of the following options :

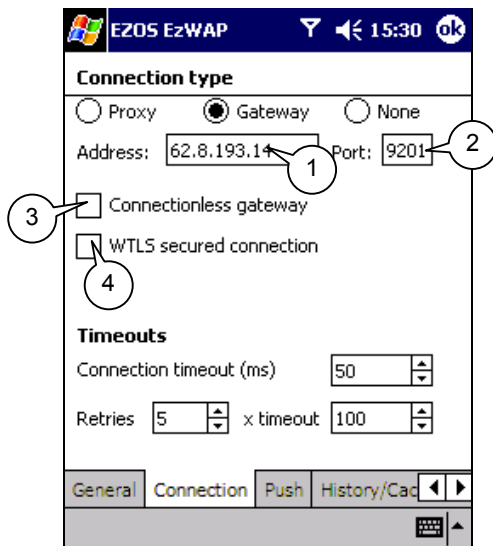
### Proxy

Select this option if your mobile phone network operator does not operate a WAP gateway today (please consult the operator for details) and you want to use your regular Internet Service Provider to access WML-based sites.

- Complete the **Address** box (1) with the IP Address of your service provider, for example : 63.254.8.6.
- Complete the **Port** box (2) with the port number of the proxy, for example : 80.  
If applicable, complete the **User authentication** box (3) with your personal account number and the **Password** box (4) with the corresponding secret code.

### Gateway

Select this option if your mobile phone network operates a WAP gateway and you want to benefit from the additional services provided by your operator. Please consult the operator for details.

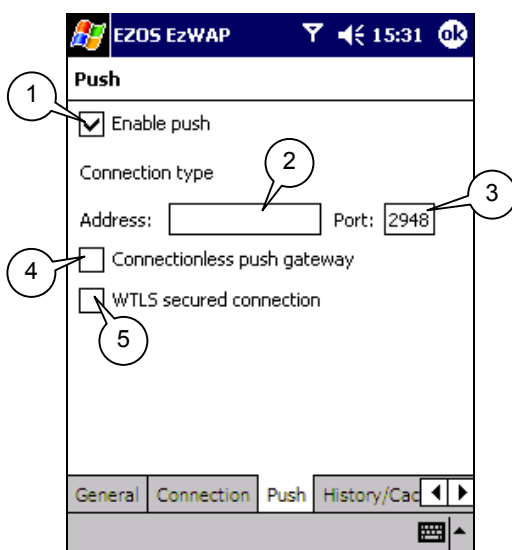


- Complete the **Address** box (1) with the IP Address for the WAP gateway. This is a sequence of digits comprised of four integers separated by decimal points, for example : 193.96.141.24. This information can be found in the notice included in your operator's welcome pack.
- Complete the **Port** box (2) with the port number used by the WAP gateway, for example : 9200.
- Select the **Connectionless gateway** check box (3) if the gateway works in connectionless mode.
- Select the **WTLS secured connection** check box (4) if the gateway uses the WTLS technology for enhanced security over the wireless network.

#### None

Select this option if you do not connect through a proxy or a gateway.

- Under **Timeouts**, specify the **Connection timeout** in milliseconds and the number and timeout of connection **Retries**.
- Select the **Push** tab to edit the Push options.



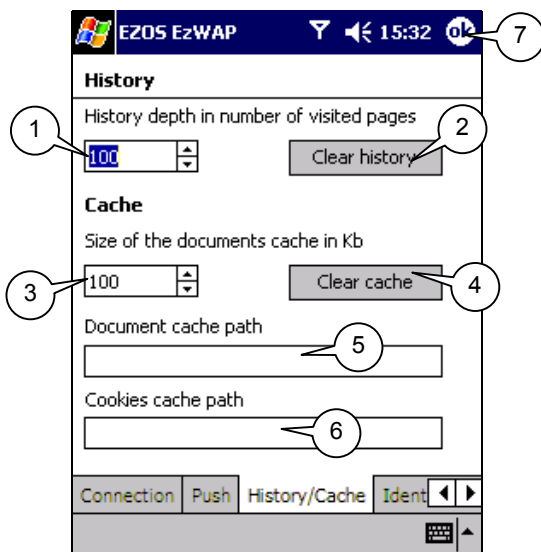
- Select the **Enable push** check box (1) if you want to enable push services, whereby on-the-fly messages such as latest traffic reports, stock quote updates, etc. are automatically delivered to your device. If you do not want to use push services, go directly to step 6.  
Important : Push services must be enabled to be able to receive MMS messages.
- Complete the **Address** box (2) with the IP Address for the push gateway. This is a sequence of digits comprised of four integers separated by decimal points, for example : 193.96.141.24. This information can be found in the notice included in the push operator's welcome pack.
- Complete the **Port** box with the port number used by the push gateway i.e., 2948 (connectionless push gateway), 2949 (connectionless push gateway with WTLS), 9120 (WTLS) or 9209 (no connectionless push gateway + no WTLS).
- Select the **Connectionless push gateway** check box (4) if the push gateway works in connectionless mode.
- Select the **WTLS secured connection** check box (5) if the push gateway uses the WTLS technology for enhanced security over the wireless network.

**Note:**

Incoming push messages are immediately signaled by a popup in your micro-browser. You have the choice to accept it (i.e., read it or go the suggested site) or keep it for later. In the second case, a special icon will be displayed on the Home page, near the Location globe icon.

**To adjust the history and cache settings**

1. In the EzWAP **Tools** menu, select **Options....**
2. Select the **History/Cache** tab.

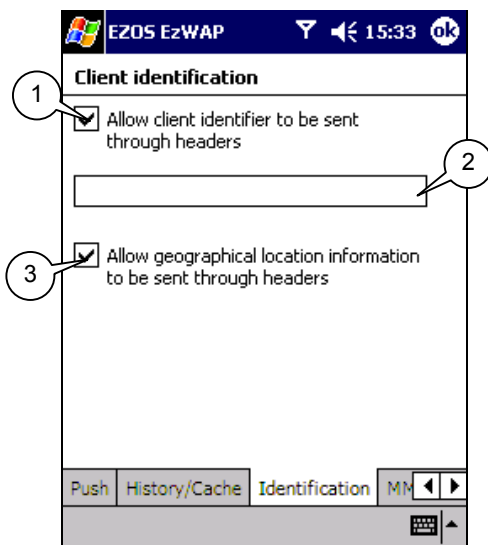


3. Use the first spin box (1) to specify the number of navigation steps that must be available for the **Forward** and **Backward** options of your EzWAP microbrowser.  
If you want to reset the history content and start with an empty one, tap the **Clear history** button (2).

- Use the second spin box (3) to adjust the cache size (in kilobytes). (In the example above, EzWAP uses 100Kb to avoid systematically reloading data from the network).  
If you want to reset the cache content and start with an empty one, tap the **Clear cache** button (4).
- Complete the **Document cache path** box (5) with the full path of the cache on your mobile device.
- Complete the **Cookies cache path** box (6) with the full path for cookies on your mobile device.

### To set the identification/localization options

- In the EzWAP **Tools** menu, select **Options...**
- Select the **Identification** tab.



- Select the first check box (1) if you have a mobile subscriber ISDN (MSISDN) contract and you accept that your phone number be supplied to visited sites for customization purposes. Use the input text box (2) to enter your phone number, including : country code, national destination code and subscriber number.  
For example : 32 477 38 72 00 (32 for Belgium, 0477 for local operator, 387200 for mobile).
- Select the second check box (3) if you accept that your geographical location details be supplied to visited sites for customized service offers. This may be useful for example if you often visit sites like weather forecasting sites that broadcast custom forecasts depending on where you are in the world.
- Tap **OK** to save the new settings.
- If you have selected the check box to accept that your geographical location details be supplied to visited sites in step 4, tap the globe icon on the EzWAP home page then tap the **Add** button to supply the details of your current geographical location or specify new potential locations.

**EZQS EzWAP** 15:33 ok

**Add Geographical Location**

Location name: Bruxelles (1)

Geo.gsm: 45;987;9;21 (2)

Geo.position: 40;50;140 (3)

Geo.region: BE-WLG (4)

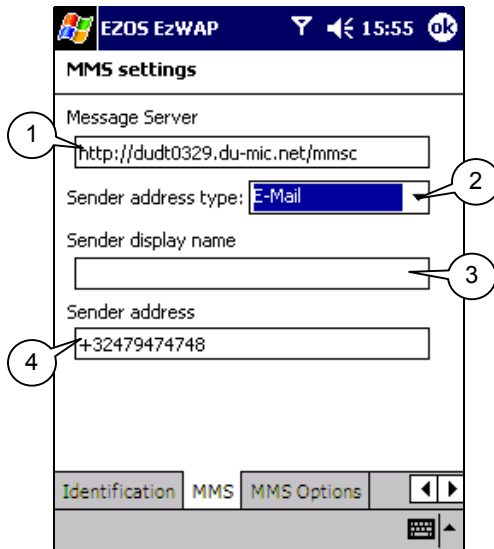
Geo.location: Bruxelles (5)

Notes:  
 Geo.gsm format: "mcc;mnc;lac;ci"  
 Geo.position format: "lat;lon;elel"

7. Complete the **Location name** box (1) with a name of your choice to identify the location.  
For example : French offices.
8. Complete the **Geo.gsm** box (2) with the full location details of your GSM.  
The format must be : MCC;MNC;LAC;CI. For example : 234;33;52;49929. This information is available in the system parameters of certain gsm models. For more details, please contact your mobile operator.  
  
MCC - Mobile Country Code. For example : 206 for Belgium, 460 for China, 208 for France, 262 for Germany, 222 for Italy, 214 for Spain, 234 for UK, 250 for Russia, 310 for USA, etc.  
MNC - Mobile Network Code. For example : 01 for Proximus (Belgium), 00 for Chntelgsm (China), 01 for Itineris (France), 01 for Deutsch Telekom (Germany), 10 for Omnitel (Italy), 07 for Telefonica (Spain), 10 for Cellnet (UK), 150 for BellSouth (USA), etc.  
LAC - Local Area Code. A value between 0 and 65535.  
CI - Cell ID. Number identifying the active cell. For example : 49929.
9. Complete the **Geo.position** box (3) with the coordinates of your geographical position.  
The format must be : latitude;longitude;elevation (optional).  
For example, 48.54;-123.84;120 indicates a location 120 meters above datum (elevation) at position 48.54 degrees North (latitude), 123.84 degrees West (longitude).
10. Complete the **Geo.region** box (4) with the standard ISO 3166-1 and ISO 3166-2 codes of your country and region.  
For example, ES-M for Madrid, GB-LND for London, FR-75 for Paris, CN-71 for Taiwan, CA-ON for Ontario.
11. Complete the **Geo.location** box (5) with the exact name of the place.  
For example : Hôtel Georges V, Paris.
12. Tap **OK** to save the location details.

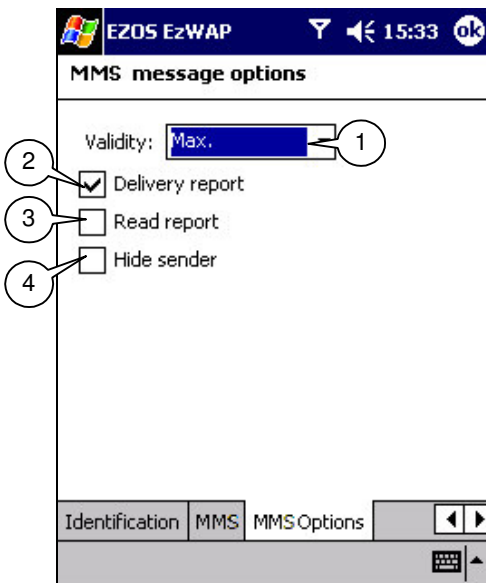
## To configure the MMS services

1. In the EzWAP **Tools** menu, select **Options....**
2. Select the **MMS** tab to edit the MMS connection settings.



- Complete the **Message Server** box (1) with the address of MMS server that is responsible for storing and handling the MMS messages. This information should have been supplied by your MMS service provider.
  - In the **Sender address type** box (2), select the type of address that you will be using to send your MMS messages. This can be :
    - a standard mobile **Phone Number**, in the international format e.g. : +32479926982
    - an **IPV4** address, i.e. IP address version 4 with the following format : 192.168.168.1
    - an **IPV6** address, i.e. IP address version 6 with the following format : 2002:3ee0:3972:00001::1
    - a standard **E-Mail** address, e.g. emma.lion@hotmail.com.
  - The **Sender display name** box (3) is accessible only if you have selected **E-Mail** in the **Sender address type** box. Enter here the name that will be used to identify you with MMS message recipients.
  - Complete the **Sender address** box (4) with :
    - your mobile device's IP address if you have selected **IPV4/IPV6** in the **Sender address type** box,
    - your email address if you have selected **E-Mail** in the **Sender address type** box,
    - your mobile phone number if you have selected **Phone Number** in the **Sender address type** box.
3. Select the **MMS Options** tab to further edit the MMS options.  
(The MMS options that you specify here will be used as default settings for the creation of new messages. If you do not want the defaults to apply to a specific message when you create or edit it in the MMS section, you can always change the options at message level. The default values for future messages will remain unchanged.)





- In the **Validity** selection box (1), select the validity period for your MMS messages. For example, if you select "1 Day", messages will be deleted from the MMS Server after 1 day if they could not be sent to the recipient.

**Note :**

With the Max. option, the maximum validity time depends on the MMS server).

- Check the **Delivery report** box (2) if you want EzWAP to display short reports indicating whether messages were delivered to their recipient(s).
- Check the **Read report** box (3) if you want EzWAP to display short reports indicating whether messages were read by their recipient(s).
- Check the **Hide sender** box (4) if you do not want your MMS recipients to know from whom the message is coming.

4. Tap **OK** to save the new settings.

## Surfing with EzWAP

### To surf with EzWAP

1. In the location box (1), enter the URL of the site that you want to access.

Or,

To access a local file, replace **http:** by **file:**

For example :

- file:c:\program files\ezos\ezwap\ezos.wmlc

- http://wap.ezos.com

Or,

Tap the location selection box to select a recently visited site.

#### Note:

If you tap (3), the address in the upper box (1) will be replaced by the corresponding title information.

2. Press **Enter**.

Or,

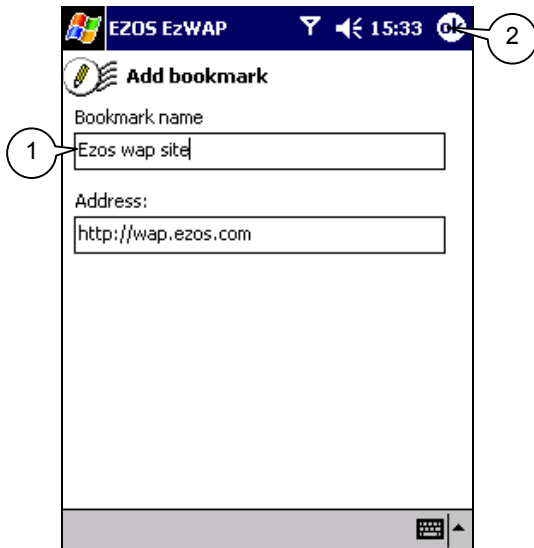
Tap the **go** button (2) to launch the request.



3. When the document is loaded, select the appropriate hyperlinks (4) to browse through the available pages.

**To define bookmarks**

1. In the location box, enter the URL of the site for which you want to define a bookmark.
2. In the **Tools** menu, select **Bookmarks**.
3. In the **Bookmarks** menu, select **Add...** to open the bookmark definition dialog box.









4. Type a name for the site in the **Bookmark name** box (1).
5. Tap **OK** (2) to save the new bookmark.

(To access the site afterwards, choose the **Tools > Bookmarks > View...** menu sequence, then select the site in the bookmark list and tap **OK**.)

## Navigating through EzWAP

### Navigation Buttons

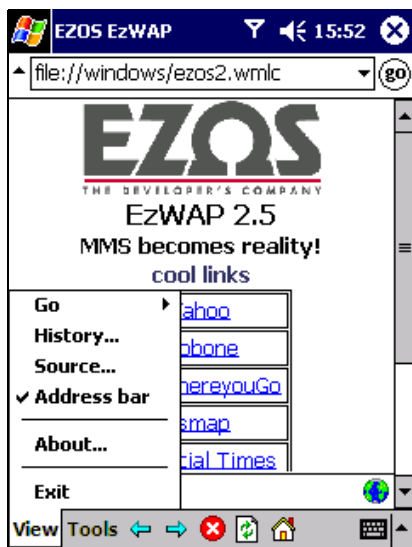
BUTTON	NAME	MEANING
	Stop	abort loading
	Reload	reload the current document from network rather than from cache
	Home	load the home page specified in the general options
	Back	go backward into the history
	Forward	go forward into the history
	Page	display the page contextual popup menu. This menu may be empty or contain site specific actions

#### Notes :

- The **Home**, **Backward**, **Forward**, **Stop** and **Reload** buttons are also available from the **View >Go** menu (see below).
- Additional hyperlinks or buttons may be available at the bottom of a page (see for example the 'Retour' and 'Choix' hyperlinks at the bottom of the screen on p. 10). When available, such objects are used to perform specific, page-dependent actions.

### View Menu Options

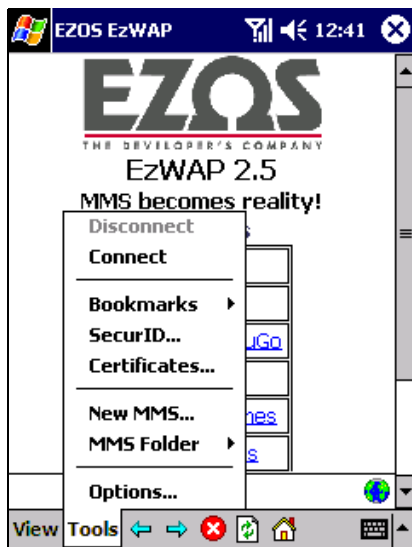
The **View** menu contains options to view the source of a page and to refresh the view.



MENU OPTION	MEANING
<b>Go</b>	Display the selected page, load the home page specified in the Preferences ( <b>Home</b> ), the previously accessed page ( <b>Backward</b> ), the next page in the browse history ( <b>Forward</b> ), stop loading ( <b>Stop</b> ) or reload the current document from network rather than from cache ( <b>Reload</b> )
<b>History...</b>	Display the recent browse history
<b>Source...</b>	Display the WML, CHTML or XHTML source code of the current page
<b>Address bar</b>	Show or hide the address bar
<b>About...</b>	Display information about the current version of EzWAP
<b>Exit</b>	Close EzWAP

### Tools Menu Options

The **Tools** menu groups a number of browsing tools, connection and configuration options.



MENU OPTION	MEANING
<b>Disconnect</b>	Stop the WAP connection
<b>Connect</b>	Connect to the WAP
<b>Bookmarks</b>	View, create and edit your bookmarks

<b>SecurID...</b>	Generate an RSA SecurID
<b>Certificates...</b>	WTLS certificate management : generate key pairs, create original user certificates, import and activate certificates
<b>New MMS...</b>	Create and send multimedia messages to wireless devices
<b>MMS Folder</b>	Read incoming MMS messages, review sent or unsent messages
<b>Options...</b>	Configure EzWAP

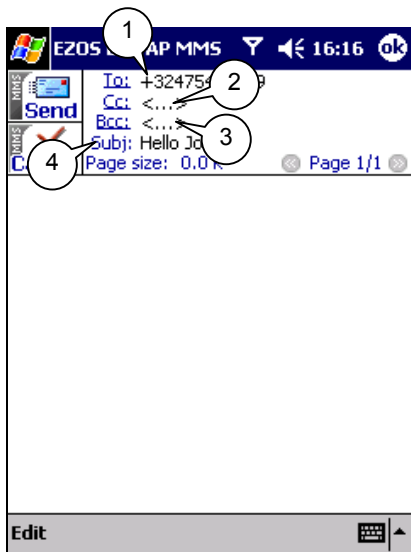
## Sending and Receiving MMS Messages

MMS messages are enhanced SMS messages capable of handling multimedia objects, including formatted text, pictures and music. To be able to send and receive MMS messages you must have configured the MMS services in the MMS tab of the EzWAP options (see 'To configure the MMS services' section). MMS messages in EzWAP are organized in three folders, similar to email in MS Outlook.

### Creating and Sending MMS Messages

#### To create and send an MMS message

1. In the **Tools** menus, select **New MMS...**

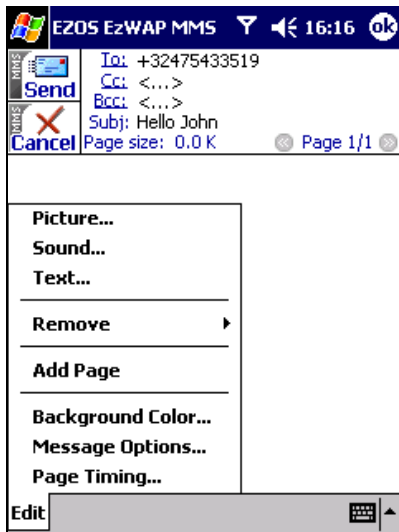


- Complete the **To** line (1) with the recipient's phone number, IPV4/IPV6 or email address or select it from your Contacts by clicking on the To hyperlink.
- Complete the **Cc** line (2) with the phone number, IPV4/IPV6 or email address of the persons that must receive a copy of your message, or select them from your Contacts by clicking on the Cc hyperlink.
- Complete the **Bcc** line (3) with the phone number, IPV4/IPV6 or email address of the persons that must receive a blind copy of your message, or select them from your Contacts by clicking on the Bcc hyperlink.

#### Notes :

- The difference between a Cc and a Bcc recipient is that Bcc recipients do not have their names displayed to the other recipients.
- For multiple To/Cc/Bcc recipients, use a semi-colon to separate each address.
- Addresses of various types (i.e., IP/phone/email) can be used for the same message.
- Complete the **Subj** line (4) with a short description of your message subject.

2. To specify the background color for the message, tap the **Edit** menu, select **Background Color**, select a color and tap **OK**.
3. Select the first type of object that you want to design on the active page using the appropriate option in the **Edit** menu, i.e. Sound, Picture or Text.



4. If you have selected **Sound**, you can either :

- import an existing melody (\*.imy, \*.amr or \*.wav).  
To do so, select the melody file from the displayed file structure and tap **OK**.
- Or,
- create a brand new melody using the integrated sound editor, EzMELODY.  
To do so, select the **New** menu and follow melody composition process below.
- Or,
- record a new sound using the microphone on your mobile device.  
To do so, tap the red button in the menu bar, start speaking or playing music and click **Stop** when done.

If you have selected **Picture**, you can either :

- import an existing picture (\*.bmp, \*.gif, \*.jpg or \*.png).  
To do so, select the picture file from the displayed file structure and tap **OK**.  
(Note : the maximum guaranteed image resolution is 200 X 200 pixels. For larger images, EzWAP will prompt you for rescaling).
- Or,
- create a brand new picture using the integrated picture editor, EzPAINT.  
To do so, select the **New** menu and follow the picture design process below.



If you have selected **Text**, you can either :

- type your text directly in the EzWAP Text Editor, edit its color and size in the **Edit** menu of the Text Editor and tap **OK** to save it.

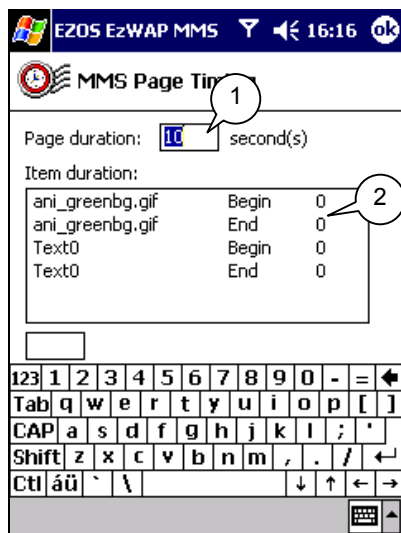
Or,

- save your text as pre-defined text for future use.  
To do so, tap the **Edit** menu, select **Edit My Text Messages**, and follow the pre-defined text creation process below.

Or,

- insert an existing, pre-defined text bit.  
To do so, select the appropriate text in the **My Text** menu.

- If you want to specify a start and/or end time for the picture and text objects that you have designed on the active MMS page (2), or for the whole page (1), select the **Edit** menu, select **Page Timing**, specify the respective durations and tap **OK** to save.



- To add a new page to your message, tap the **Edit** menu, select **Add Page** and design your message as described in steps 3-5.
- To edit the message validity, delivery, class or priority options, tap the **Edit** menu, select **Message Options**, specify the appropriate options and tap **OK** to save.
- When the message is ready :

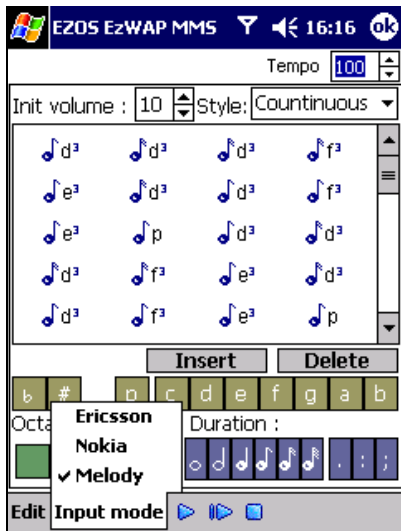
Tap the **Send** button in the message header to send it directly to the recipient

Or,

Tap **OK** to save it to your Unsent box if you do not want to send it now.

### To compose a new melody

1. Open EzMELODY by selecting the **New** or **Edit** menu in the Select sound page.
2. In the **Input mode** menu, select the appropriate input format for the melody that you want to design i.e. Ericsson, Nokia or standard I-Melody.



3. Compose your melody using the notes and symbols in the composition area. The following definitions may be useful :

Tempo : the speed of music, i.e., the rate at which the notes follow one another.

Init. volume : the volume of the melody, i.e., higher or lower.

Style : the melody style, which can be :

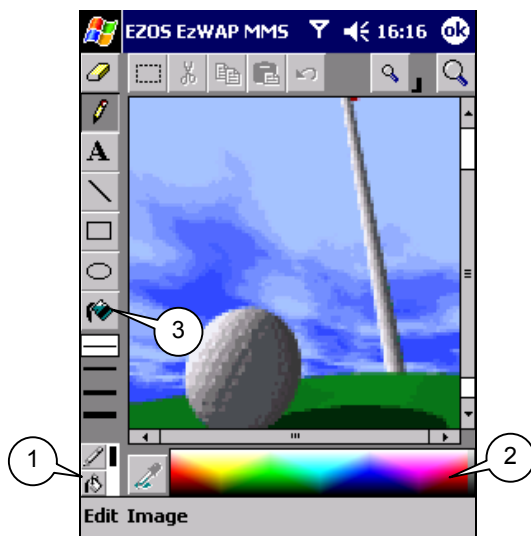
- 'Continuous' : played without spaces between notes.
- 'Natural' : played with a space of half a note between two notes.
- 'Staccato' : played with a space of one note between two notes.

Octave : an interval of eight pitches.

4. When your melody is ready, tap **OK** to close EzMELODY, enter a name for the new melody and tap **OK** again to save.

## To draw a picture





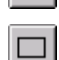
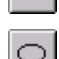




1. Open EzPAINT by selecting the **New** or **Edit** menu in the Select picture page.



2. To set the background color of your picture :

- select the **Fill Color** tool (1)
- select the appropriate color by tapping in the **Color** box (2)
- select the **Paint Bucket** tool (3)
- tap anywhere in the picture background

3. Select the appropriate tool on the left to specify what you want to do :

	<u>Eraser</u> :	to erase a region by covering it with the selected fill color.
	<u>Freeform</u> :	to draw free shapes as you would with a pencil on paper.
	<u>Text</u> :	to place text wherever you want in the picture.
	<u>Lines</u> :	to draw various-size lines.
	<u>Rectangle</u> :	to draw rectangles and squares by dragging with the pointing device.
	<u>Ellipse</u> :	to paint ellipses by dragging with the pointing device.
	<u>Paint Bucket</u> :	to fill a contiguous region of similar color pixels with the selected fill color.
	<u>Thickness</u> :	to select the desired line thickness for lines and shapes (i.e. rectangles, ellipses or freeforms).
	<u>Line Color</u> :	to select the color to be used to draw lines and shapes.
	<u>Fill Color</u> :	to select the color to be used to fill shapes.

4. Draw your picture with the selected tool.
5. Use the buttons in the upper toolbar to perform a specific action :



Select : to select a region for performing a specific action.



Cut : to cut the selected region.



Copy : to copy the selected region to the Clipboard.



Paste : to paste the content of the Clipboard.



Undo : to undo the last action.



Zoom in : to zoom in.



Zoom out : to zoom out.

6. When your picture is ready, tap **OK** to close EzPAINT, enter a name for the new picture, select its type and tap **OK** again to save.

## To create pre-defined text

1. Open the EzWAP Text Editor by selecting **Edit My Text Messages** in the **Edit** menu.



2. Point to a **(New Text)** line (1).
3. Using the keypad below (3), type your text in the edit box (2).
4. When the text is ready :

Tap **OK** to save it and close the predefined text editor.

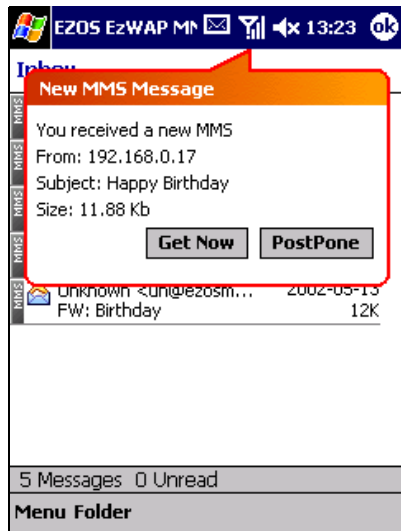
Or,

Select a new **(New Text)** line (1) to define additional text with the predefined text editor.

5. To use the pre-defined text afterwards, select it in the **My Text** menu when you create or edit the text of a message.

## Receiving MMS Messages

A notification message appears in EzWAP whenever an incoming MMS message has been received on the MMS server.



The notification message displays the following information about the message : sender's ID, subject and size. You can decide to retrieve the message (i.e., save it to your Inbox now) or to leave it on the MMS server and keep only the notification message in your Inbox.

Tap **Get Now** to retrieve the message now.

Or,

Tap **Postpone** to leave the message on the server and save only the notification. When you decide to retrieve and read the MMS, simply tap on the notification in your Inbox (**Tools** menu > **MMS Folder** > **Inbox**). The message will be automatically retrieved and displayed.

## Managing Security

There are several vendors of products that provide facilities for authentication and authorization in mobile environment. The following facilities can be configured in EzWAP :

- RSA SecurID
- WTLS certificates

### RSA SecurID

Access to a number of secure mobile e-business sites is subordinated to a control of authentication by means of a unique RSA SecurID. EzWAP allows you to generate one-time SecurIDs based on existing activation licenses.

#### To generate a SecurID

1. Tap the **Tools** menu and select **SecurID...**
2. In the Information dialog box, enter your current passphrase if you have already defined one, or enter a passphrase of your choice if you have not defined it yet.
3. Tap **OK**.
4. In the SecurID fob, select the activation license (1) for which you need to generate the SecurID (if the license is not in the list, tap **New** from the selection box to add the details of a new license manually or to import it from a file), use the number keys (2) to enter the input code provided by the site, then tap **Generate** (3).



5. Copy the generated SecurID (4) to the target location on the secure site.

#### Note:

SecurIDs are valid only for a very limited period of time (usually 1 minute). This requires that the time on the mobile device is exactly the same as on the remote server. The lowering pile before the SecurID gives an indication of the remaining time to validate the SecurID on the site. If there is a certain time lag between the system time on your mobile device and the server time, meaning that the SecurID may have already expired by the time you type it in the site, tap **Next** to generate a further SecurID, and try with this one instead.

## WTLS Certificates

WTLS Certificates may be used on sensitive banking/shopping WAP sites to ensure security between WAP gateways/proxies and you, the client.

The WTLS Certificate method uses a Public Key – Private Key system for its encrypting. Your Public Key is generated with your Private Key by a process known as **Key Pair Generation**. Using the generated Key Pair, EzWAP is able to create an **Original User Certificate**. This certificate contains your Public Key only (+ identification information) and will be sent to a Certificate Authority (or 'CA', such as Verisign, Entrust or GlobalSign) during an enrollment procedure the first time you use the services of a secured site. After a checking and validation process of the information in your Original User Certificate, a **Client Certificate** will be issued and certified by another certificate (known as **CA Certificate**) delivered by the Certificate Authority. Certain CA Certificates are stored automatically on your mobile device, while others are sent by the CA and need to be imported manually. Certain are immediately active, others need to be activated manually using a 30-digit code supplied by email, regular mail or another media.

### In short :

1. Generate Key Pair (= Private Key + Public Key)
2. Create Original User Certificate
3. From secured site, send Original User Certificate and obtain Client Certificate + CA Certificate
4. (If necessary) Import and activate CA and Client Certificates

### To generate a Key Pair and create an Original User Certificate

1. In the **Tools** menu, select **Certificates...**
2. In the **Type** box, select **Private Key**.
3. Tap the **Generate key pair** button.
4. Answer the confirmation message.
5. Tap **OK** when you see the message informing you that the key pair has been successfully generated.
6. Tap the **Create origin. user cert.** button.  
The new certificate is instantly appended to your Client Certificate list, on a new page.



### To import a certificate

1. In the **Tools** menu, select **Certificates...**



2. Tap the **Import** button, select the location and file extension.
3. In the list of found certificates, select the certificate to import.

### To view the imported certificates

1. Select the type of certificate (**Client** for a client certificate or **CA** for a CA Certificate).
2. Use the top right and left arrows to browse the certificate and check the **Detailed view** box to view details about the current certificate.
3. Tap **Ok** to close the certificate window.

### To activate a CA certificate

1. In the **Tools** menu, select **Certificates...**
2. In the **Type** box, select **CA**.
3. Use the top right and left arrows to select the appropriate certificate.
4. Tap the **Activate** button.
5. Enter the 30-digit activation code that you have received and confirm.

## Glossary

---

### Authentication

The verification (check) of the identity of a user. Authentication can be carried out user-oriented (user authentication) or computer-oriented (by the computer address).

### Cache

A small fast memory holding recently accessed information, designed to speed up subsequent access to the same data.

### Card

An organization metaphor used to refer to a block of WML code. A card usually defines a single action or operation that will be available on a small screen. Depending on the application, a number of action cards can be bundled into a deck to offer a more complex resource.

### CHTML

Compact HTML. An alternative language to WML, that was developed by the Japanese company NTT DoCoMo for web browsing and exchanging email from mobile devices.

### Cookie

A piece of information, such as login or registration information, online “shopping cart” information, user preferences, etc., which is sent by a (WAP) server to a browser. This information may be saved locally on the device for quicker, customized access to visited pages.

### Deck

A sequence of WML cards organized as a single unit for transmission to a WAP device. A deck is similar to an HTML page when thinking in terms of Web pages, in that it is identified by a Web address and is the basic unit of content transmission.

### i-Mode

A text-based mobile information service developed by the Japanese company NTT DoCoMo in February 1999. i-Mode uses CHTML (compact HTML) for web browsing and exchanging email from mobile devices, very much like WAP uses WML to browse decks and cards.

**IP address**

The unique number that identifies a machine on the Internet. Usually, this address is represented by four numbers joined by periods, like 129.133.10.10. The first two or three pieces represent the network that the system is on, called its subnet. For example, all the computers for Wesleyan University in the U.S.A. are in the subnet 129.133, while the number in the previous paragraph represents a full address to one of the university's computers.

**MMS (Multimedia Messaging Service)**

The new generation of wireless services that allows users to incorporate color pictures, sound, music and text throughout wireless messages.

**M-Services**

A text-based mobile information service developed by a major American standards organization in December 2000. M-Services uses XHTML Basic, a stripped-down version of XML, for web browsing and exchanging email from mobile devices, very much like WAP uses WML to browse decks and cards.

**MSISDN**

Mobile Subscriber Integrated Services Digital Network. A standard description of a mobile phone number (i.e., phone number without the International Direct Dial (IDD) access code for the country).

**Proxy**

A server configured to act as a security barrier between an internal network and the Internet, keeping other people on the Internet from gaining access to confidential information on the internal network or on individual PCs connected to the network.

**Push**

A new technology responsible for the proactive reception of information on server initiated transactions.

**WAP Gateway**

A dedicated two-way device that translates WAP contents and user requests using a common WAP protocol. Similar to a "door" through which data would transit between the Internet and the wireless network.

**WML (Wireless Markup Language)**

The markup language used to create decks. WML fulfils the same purpose as HTML does on World Wide Web.



**Belgium**  
Rue de l'Hôpital, 5  
B-1420 Braine-l'Alleud  
Phone: +32 2 387 20 00  
Fax: +32 2 387 20 10

**France**  
Boulevard de Valmy, 1  
F-59650 Villeneuve d'Ascq  
Phone : + 33 3 20 19 00 60  
Fax : + 33 3 20 19 00 69

E-mail: [info@ezos.com](mailto:info@ezos.com)  
Web site: <http://www.ezos.com>

**WTLS (Wireless Transport Layer Security)**

The protocol used to ensure security (data integrity, confidentiality, authentication and non-repudiation) between the wireless device and the WAP gateway/proxy.

**XHTML**

An alternative language to WML, that was developed by a major American standards organization for web browsing and exchanging email from mobile devices.



**Belgium**  
Rue de l'Hôpital, 5  
B-1420 Braine-l'Alleud  
Phone: +32 2 387 20 00  
Fax: +32 2 387 20 10

**France**  
Boulevard de Valmy, 1  
F-59650 Villeneuve d'Ascq  
Phone : + 33 3 20 19 00 60  
Fax : + 33 3 20 19 00 69

E-mail: [info@ezos.com](mailto:info@ezos.com)  
Web site: <http://www.ezos.com>

## Bug Report

---

Please fill the following form and send it to [software@ezos.com](mailto:software@ezos.com).

Thank you for your help!

*The EzWAP Development Team.*

---

EzWAP version / build : .....

OS/Platform : .....

Problem area : ☐ Com  
☐ Navigation  
☐ User Interface  
☐ Other... Please specify : .....

Problem type : ☐ Crash  
☐ Unable to access a WAP site  
☐ Bad data display  
☐ Other... Please specify : .....

Is the problem reproducible? ☐ Yes  
☐ No  
☐ Don't know

Please provide a detailed description of the specific problem you experienced.  
Tell us what you expected to happen and what actually happened.

.....  
.....  
.....  
.....  
.....  
.....  
.....  
.....  
.....

Other remarks or suggestions :

.....  
.....  
.....  
.....



**Belgium**  
Rue de l'Hôpital, 5  
B-1420 Braine-l'Alleud  
Phone: +32 2 387 20 00  
Fax: +32 2 387 20 10

**France**  
Boulevard de Valmy, 1  
F-59650 Villeneuve d'Ascq  
Phone : + 33 3 20 19 00 60  
Fax : + 33 3 20 19 00 69

E-mail: [info@ezos.com](mailto:info@ezos.com)  
Web site: <http://www.ezos.com>